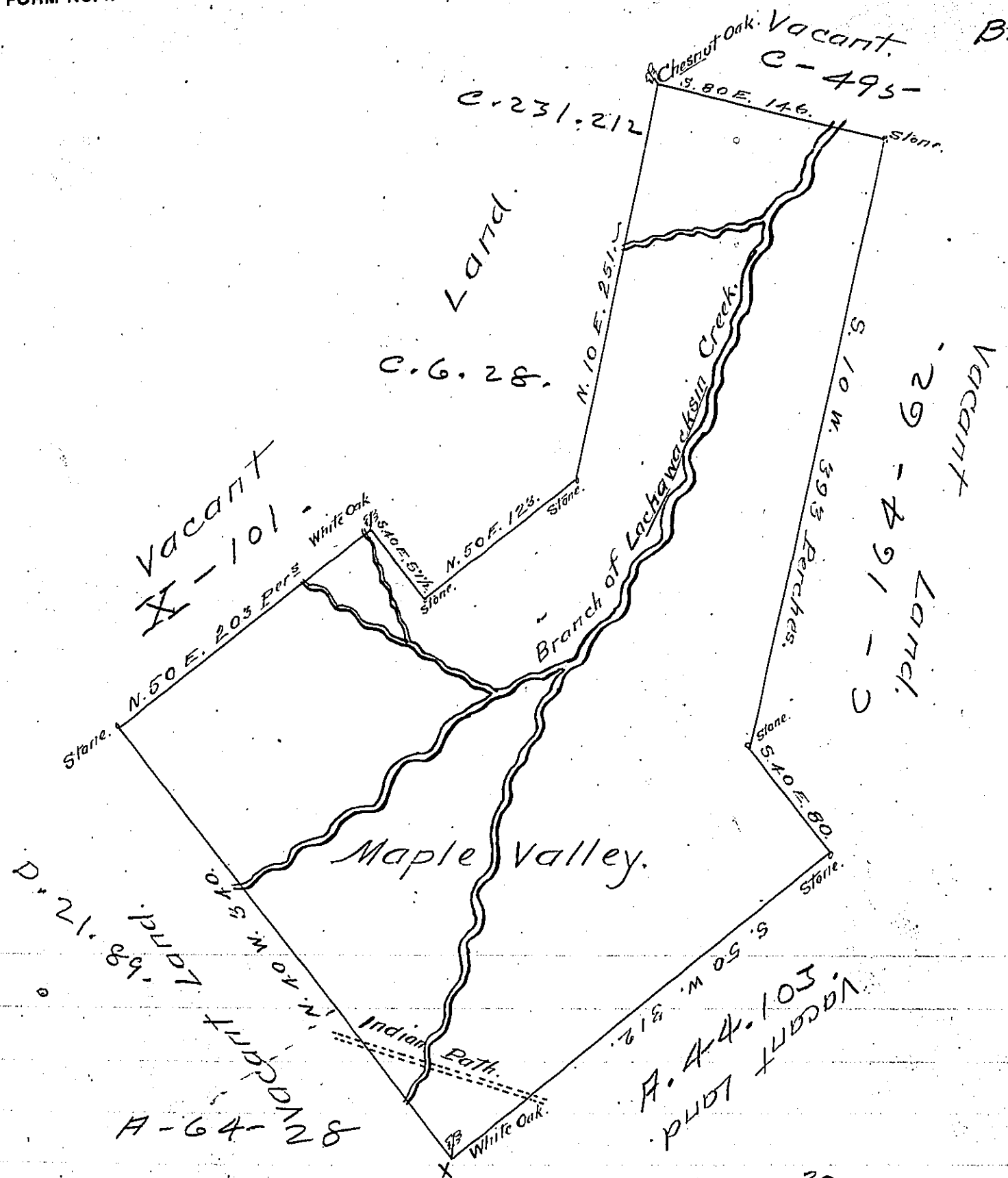


B. Grove - PIKE



By VIRTUE of a Warrant dated the ³⁰ 31st July 1765
 Survey'd the 9th October 1766 to Jonas Seely Esquire
 the above described Tract of Land situate on a
 branch of Lachawacksein Creek beyond the Blue
 Mountains in Northampton County containing eight
 Hundred & seventy three acres & 94 perches with
 allow^e of 6 ¹/₂ Cent

James Scull.

Call'd Maple Valley.

IN TESTIMONY that the above is a copy of the original remaining on file in
 the Department of Internal Affairs of Pennsylvania, made
 conformably to an Act of Assembly approved the 16th day of
 February, 1833, I have hereunto set my Hand and caused
 the Seal of said Department to be affixed at Harrisburg,
 this twelfth day of December 1906.

Loach R. P. P. P.
 Secretary of Internal Affairs.